

# Learning with Tech in CTSS



**With the introduction of Personal Learning Devices, Blended Learning now allows our educators to re-think curriculum and assessment design and**

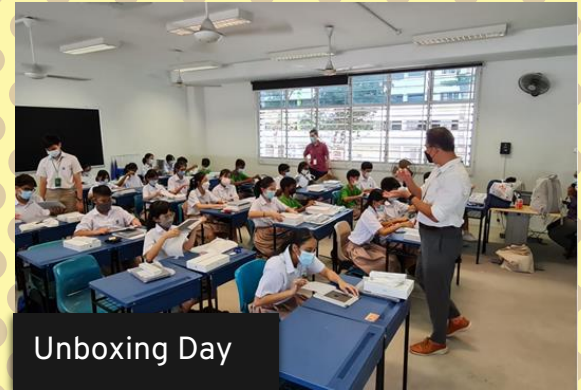
# Let's Hear It from our Students



Tasks provided by teachers promote thinking.

# Parent Engagement Session

Using Technology for Learning by Teenagers –  
How Parents Can Better Support and Connect with Them?  
4 Mar 2023, 0900 - 1030h





# A WARM WELCOME FROM US



**Mr Ng**  
Vice Principal



**Mr Chia Chun  
Kiat**  
YH/Sec 1, 2



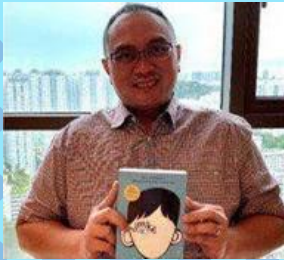
**Mr Teo Chai Yaw**  
YH/ Sec 1,2



**Mrs Teresa  
Chua**  
HOD/EL



**Mdm Loh Wee  
Sin**  
HOD/MTL



**Mr Kamal**  
SH/ICT



**Mr Tan Liang Hooi**  
HOD/ICT



**Ms Li Qianyi**  
KM & Ed Tech  
Committee

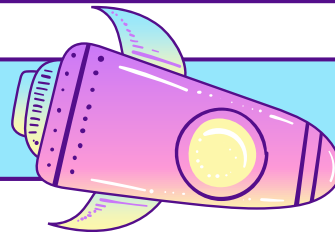


**Mr Aidil Md Idris**  
KM & Ed Tech  
Committee



**Mrs Emmeline Teng**  
Lead Teacher /  
Geography

# Agenda



**01**

## Introduction

Our students have received their iPads. What's next?

**02**

## Overview of DMA

How does DMA support us to help our children learn and develop better?

**03**

## Tech for Learning and Connecting

How can we engage our children on the responsible use of tech?

**04**

## Let's Share

Q&A? How have we managed our child's use of devices? What are the challenges we faced? Suggestions?

We have  
un-boxed  
on 3 Mar



# Self-Directed Learning Days

1CC1

CLEMENTI TOWN SECONDARY SCHOOL, SINGAPORE

	1	2	3	4	5	6	7	8	9	10	11	12	13	14	15	16
	7:35 - 7:45	7:45 - 8:00	8:00 - 8:35	8:35 - 9:10	9:10 - 9:45	9:45 - 10:20	10:20 - 10:55	10:55 - 11:30	11:30 - 12:05	12:05 - 12:40	12:40 - 13:15	13:15 - 13:50	13:50 - 14:25	14:25 - 15:00	15:00 - 15:35	15:35 - 16:10
Odd Mon	Flag Raising and Spick & Span	CCAP Time	PE	EL	EL	EL	Recess	Geog	Geog	Geog	CPA	Lunch	Sci	Sci	Sci	
Odd Tue	Flag Raising and Spick & Span	ASPIRE	D&T	Math	Math	Math	Recess	LE	LE	LE	CPA	Lunch	Math	Math	Math	
Odd Wed	Flag Raising and Spick & Span	READ/TPI	Math	Math	Math	Math	Recess	Art	Art	Art	EL					
Odd Thur	Flag Raising and Spick & Span	READ/TPI	Math	Math	Math	Math	Recess	Hist	Geog	Geog	CPA	Lunch	Math	Math	Math	SS
Odd Fri	Flag Raising and Spick & Span	Sci	Sci	Sci	Sci	PE	Recess	Music	Music	CCE2	CCE2					
Even Mon	Flag Raising and Spick & Span	CCAP Time	Math	Math	Math	Math	Recess	LE	LE	LE	CPA	Lunch	Hist	Geog	Geog	
Even Tue	Flag Raising and Spick & Span	ASPIRE	Music	PE	PE	PE	Recess	Geog	Geog	Geog	CPA	Lunch	Math	Math	Math	
Even Wed	Flag Raising and Spick & Span	READ/TPI	Sci	Sci	Sci	Sci	Recess	PE	PE	PE	CCE2	Lunch	Math	Math	Math	
Even Thur	Flag Raising and Spick & Span	READ/TPI	D&T	Recess	Recess	Recess	Recess	Math	Math	Math	Lunch	Art	Art	Art	SS	
Even Fri	SDL Day					Break										

Even Fri EL MA break MTL Sci

4 hours of Curriculum

Asynchronous, 50 min per lesson  
Subjects: English, Mother Tongue, Math, Science

1 hour for Digital Literacy Learning (Term 1)

Self-paced mandatory modules with hands-on tasks utilising digital apps to document learning, collaborate with others, enhance productivity

# Sec 1: Digital Literacy Learning Packages

## Lesson 1 27 Jan

*What they have learnt & done:*

- Set SMART goals
- Create a copy of Google Slides (digital portfolio), basic features, share slides with CCAP
- Create a post on Padlet, basic features, upload links



## Lesson 2 10 Feb

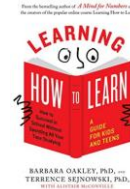
*What they have learnt & done:*

- Ways to beat procrastination
- Create Google Docs, formatting features, share and comment on Google Docs
- Turn in assignment on Google classroom

## Lesson 3 24 Feb

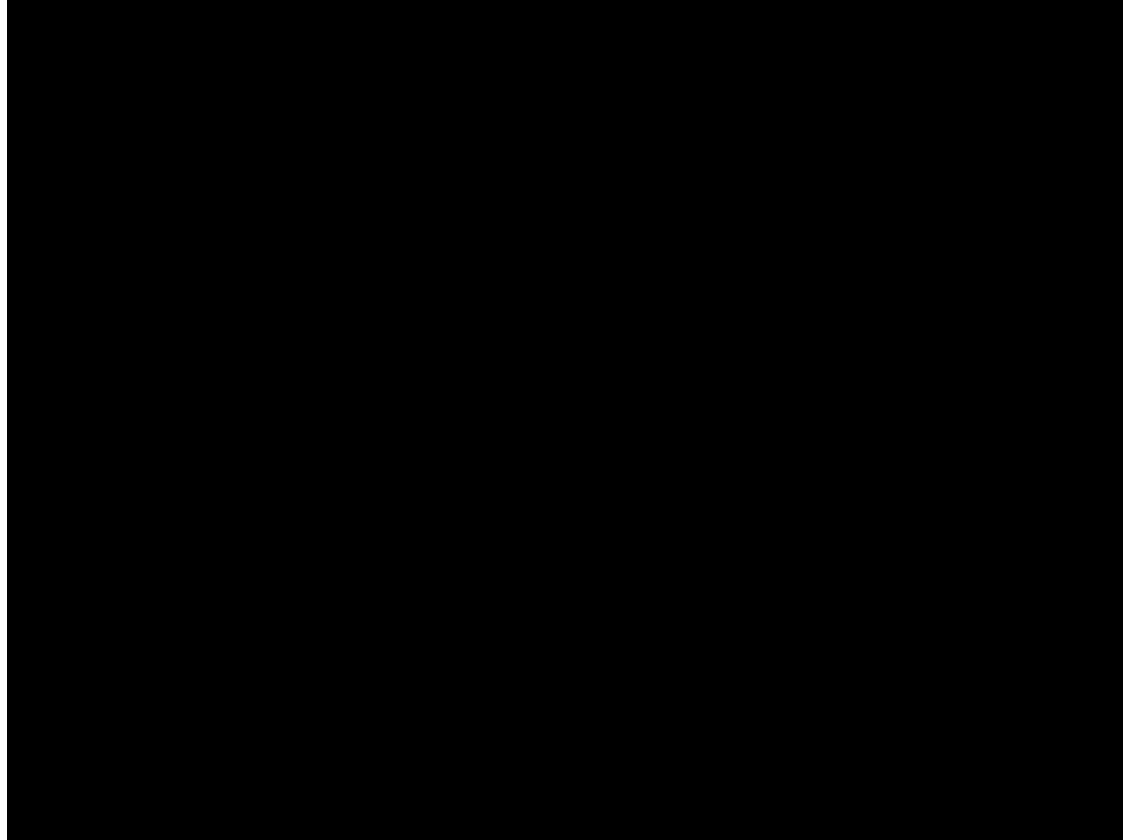
*What they have learnt :*

- Recap search engines and keywords
- Advanced search skills
- Reverse image search
- Learning Effectively: How to Overcome being Stuck, How to Maximise Working Memory





# Sec 1 End-of-Term Cohort Activity (9 Mar)



# Self-Directed Learning Day (10 Mar)

Using Files App  
to Organise Files



Using Google  
Calendar to  
Manage Schedule



Using Google  
Keep to  
Organise Tasks



Managing  
Gmail Inbox



# Self-Directed Learning Days in Term 2

4 hours of curriculum

Asynchronous, 50 min per lesson  
Subjects: English, Mother Tongue,  
Math, Science

1 hour for student-  
initiated learning (SIL)

With effect from Term 2,  
students may pursue an area of  
interest or passion



02

## Overview of DMA

How does DMA support us to help our children learn and develop better?



The use of technology can be a double-edged sword for teenagers. They have easy access to information and can collaborate with others, but...

### **Distraction from learning**

72% of teens feel compelled to immediately respond to texts, social posts and notifications.

*(Kimball & Cohen, 2019)*

### **Excessive screen-time**

Teens who don't sleep enough report higher levels of depressive symptoms than well-rested peers (31% vs 12%).

*(Kimball & Cohen, 2019)*

### **Harmful online content**

50% of Singaporean teenagers are exposed to cyber threats & 28% of them are exposed to violent content.

*(COSI, 2020)*

## Our Beliefs on the Use of PLD

1. The PLD is a learning device.
1. However, the use of technology can be a double-edged sword.
1. For students to learn better with their PLD, boundaries need to be set so that students are not distracted from learning, their screen time is moderated, and they are protected from harmful online content.
1. Teenage students need to be engaged on these boundaries.

## DMA is a tool to help set boundaries

The Device Management Application (DMA) software consists of the following three components:

- Mobile Device Management Service (*for IT admin*)
- Classroom Management Service (*for Teachers*)
- **Usage Management Service (*for Parents*)**

# DMA Service Components and their Functions

## 1. Mobile Device Management Service (MDM)<sup>1</sup>

This facilitates the updating and management of the PLDs, protects PLDs from malicious software, and protects students from objectionable internet content.

- Facilitates automatic installation of apps required for teaching and learning
- Filters objectionable content (e.g. social media, pornography, gambling, extremist and violence)
- Protects the students' PLDs from security vulnerabilities through automatic updating and patching of apps and device Operating System (OS)

<sup>1</sup> MDM is a core service that is required to deliver Classroom Management Service and Usage Management Service (which includes the Parental Control app).



# DMA Service Components and their Functions

## 2. Classroom Management Service (CMS)

This enables teachers to manage the students' use of the PLD during lesson time to improve classroom management and support effective teaching and learning. Teachers will only monitor students' activities during lessons.

During lessons, teachers will be able to:

- Manage and control devices (e.g. using the “Eyes Up” function)
- Launch specific applications and/or websites for teaching and learning on students' devices
- Facilitate sharing of content
- Monitor usage and activities (e.g. screen sharing, monitoring students' browsing history during lessons)

# DMA Service Components and their Functions

## 3. Usage Management Service (UMS)

This enables the school and/or parents to better supervise and set helpful limits for students' use of PLDs after school.

- Screen time control ensures that students do not use the PLDs excessively
- School and/or parents/guardian control installation of applications to ensure that the device is used optimally for teaching and learning
- Safe search and additional web content filtering protects students from harmful content
- Parents/Guardian can monitor usage and activities by students

# Data Collected and Access Rights

The DMA does NOT collect any of these data:

- Login IDs and passwords
- Activities and data (e.g. posts, online comments, shopping cart, etc.) when visiting websites and use apps
- Documents and photos stored in the PLDs
- PLD location
- Webcam videos and microphone recordings

# DMA Overview@CTSS

	Mon - Fri	Sat - Sun
10.30 pm	Sleep Hours for iPads will be activated	After School Hours
5.30 am	School Hours School has full control	
3.30 pm	After School Hours	
10.30 pm		

10.30 pm

5.30 am

3.30 pm

10.30 pm

# DMA Options@CTSS

School Hours Mon - Fri, 5.30am to 3.30pm	Options	Sleep Hours/ After-School Hours	Mobile Guardian (MG) Parent Portal
DMA managed by school.  School has control	<i>Highly recommended</i> <b>Default Option</b>	School has control.	View-only child's web-filter history.
	<b>Option A</b>	Parents have control.	Set permissions on MG from scratch.
	<i>Highly discouraged</i> <b>Option B</b>	Child has control.	Not Applicable.

To request for Option A or B, please write in to [askndlp@ctss.edu.sg](mailto:askndlp@ctss.edu.sg).  
Changes are effected at the end of each month.

# Deciding on the choice of after-school DMA option

Parents may wish to consider the following questions before deciding on the choice of after-school DMA option which is best for your child's/ward's learning.

## 1. Child's current device usage habits

- How much time does my child spend on their device?
- How well is my child able to regulate their device usage on their own?
- Does my child get easily distracted while doing online learning?

## 2. Parental involvement

- How confident and familiar am I with managing my child's cyber wellness?
- Are there existing routines and open conversations on the use of the Internet at home?
- Am I aware of how to prevent different types of cyber threats that my child might face?



***Have a conversation with your child to talk about which setting is best for your child's learning.***



- Home
- Schedules
- Webfilter Reports

Child 1

Last seen 6 hours ago

Active profile : CTSS Sleep Hours - 2021 Semester 2 (school)

Child 2

Last seen 13 hours ago

Active profile : CTSS Sleep Hours - 2021 Semester 2 (school)

# Web browsing history

Past 24 hours ▾

search

Search

[View In Report](#)

Created	Web Address		
23/10/2021 23:19	<a href="https://www.google.com">https://www.google.com</a> <a href="#">youtube</a> <a href="https://www.google.com/search?q=youtube&amp;safe=active&amp;nfpr=1">https://www.google.com/search?q=youtube&amp;safe=active&amp;nfpr=1</a>	Profile: CTSS Sleep Hours - 2021 Semester 2 <b>Blocked</b> by classroom lock-down	
23/10/2021 23:18	<a href="https://www.google.com">https://www.google.com</a> <a href="#">nn%20Put</a> <a href="https://www.google.com/search?q=nn%20Put&amp;safe=active&amp;nfpr=1">https://www.google.com/search?q=nn%20Put&amp;safe=active&amp;nfpr=1</a>	Profile: CTSS Sleep Hours - 2021 Semester 2 <b>Blocked</b> by classroom lock-down	
23/10/2021 23:18	<a href="https://www.google.com">https://www.google.com</a> <a href="https://www.google.com/">https://www.google.com/</a>	Profile: CTSS Sleep Hours - 2021 Semester 2 <b>Blocked</b> by classroom lock-down	
23/10/2021 23:18	<a href="https://www.google.com">https://www.google.com</a> <a href="https://www.google.com/search">https://www.google.com/search</a>	Profile: CTSS Sleep Hours - 2021 Semester 2 <b>Blocked</b> by classroom lock-down	
23/10/2021 21:27	<a href="https://www.google.com">https://www.google.com</a> <a href="https://www.google.com/search&amp;safe=active">https://www.google.com/search&amp;safe=active</a>	 Allowed	
23/10/2021 21:00	<a href="https://login.microsoftonline.com">https://login.microsoftonline.com</a> <a href="https://login.microsoftonline.com/consumers/oauth2v2.0/authorize">https://login.microsoftonline.com/consumers/oauth2v2.0/authorize</a>	 Allowed in category Technology	
23/10/2021 21:00	<a href="https://accounts.google.com">https://accounts.google.com</a> <a href="https://accounts.google.com/_/bscframe">https://accounts.google.com/_/bscframe</a>	 Allowed	
23/10/2021 21:00	<a href="https://accounts.google.com">https://accounts.google.com</a> <a href="https://accounts.google.com/o/oauth2v2/auth">https://accounts.google.com/o/oauth2v2/auth</a>	 Allowed	
23/10/2021 20:59	<a href="https://web.whatsapp.com">https://web.whatsapp.com</a> <a href="https://web.whatsapp.com/">https://web.whatsapp.com/</a>	 <b>Blocked</b> by URI blacklist	



You can:

- Enable access to App Store
- Modify the Sleep Hours
- Set additional/relax restrictions

02

# Overview of DMA

Q&A on Device Management Application





03

# Tech for Learning and Connecting

How can we engage our children on  
the responsible use of tech?





04

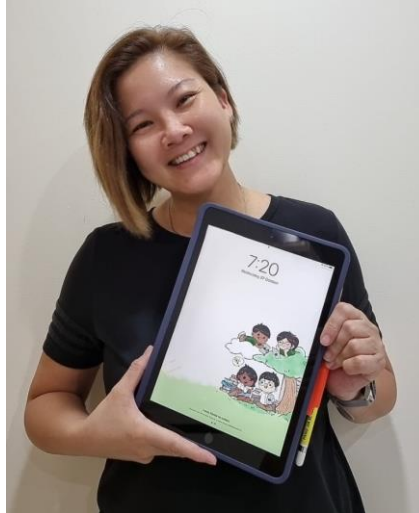
## Let's share

How have we managed our child's use of devices?  
What are the challenges we faced?  
Suggestions?

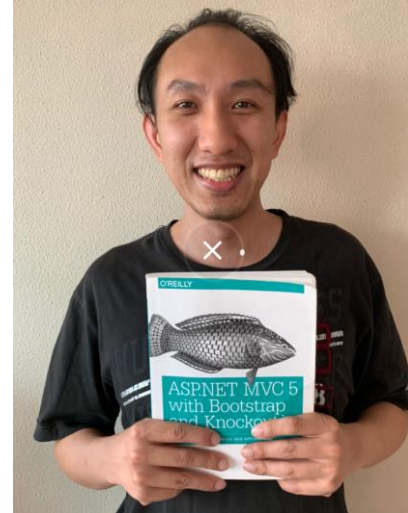
# Tech for Learning Parents Support Team



**Chew Yen**



**Connie**



**Daniel**

# Additional Resources (NDLP Google Site for Parents)

## RESOURCES FOR PARENTS

Clementi Town Secondary School embraces the use of Information and Communications Technology (ICT) as a key enabler in designing and implementing meaningful learning experiences for our students, aligned with our school's NDLP vision of *supporting the development of each Clementeen with the passion to learn, thriving in a digital environment, learning with each other, anytime and anywhere.*

### LET'S START WITH THE BASICS...



[Know more about PLDs](#)



[What is DMA? Need help?](#)



[Warranty, Insurance issues? Click here](#)




[Account related issues? Click here](#)



# Additional Resources

## ("Tech for Learning Support Group" Telegram Chat)

The logo for CTSS (Circuit Training Support System) is displayed in a large, bold, green font.The text "Tech For Learning" is written in a white, sans-serif font on a dark grey rectangular background.

CTSS Tech for Learning Support Group

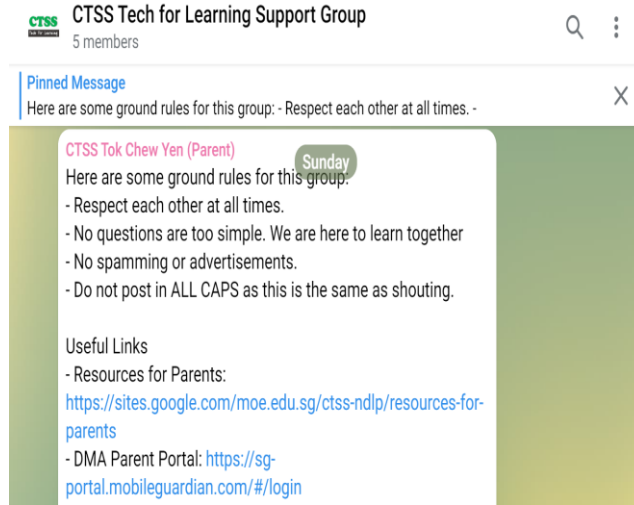
5 members



This is a peer learning support group for Parents of students who have received their device under the NDLP. We are here to champion Tech for Learning and hope that devices will aid our children's learning.

Do share with us on your ideas and suggestions

Info



# Tech for Learning Parents Support Team Join Us!

If you're interested to support other parents in engaging their child on the use of technology for learning, do join us.

You can contact Qianyi (94365883).



**Chew Yen**



**Connie**



**Daniel**



# Tech for Learning Parents Support Team Join Us!

If you're interested to support other parents in engaging their child on the use of technology for learning, do join us.

You can contact Qianyi (94365883).



**Chew Yen**



**Connie**



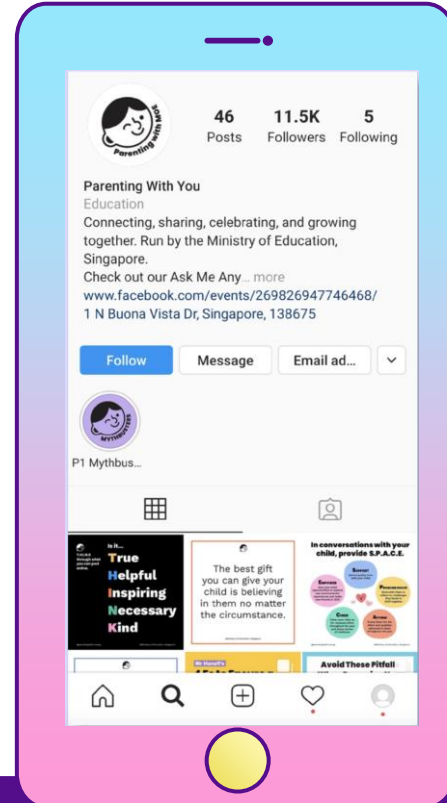
**Daniel**

# Sharing More Than Parenting Tips...



Follow [@parentingwith.moe.sg](https://www.instagram.com/parentingwith.moe.sg)

Check out this **Instagram page** for parents to connect and celebrate ups and downs of parenting, share tips and stories on parenting experience



# Parents' Role

- We would like to partner parents to ensure that students are well supported in their use of technology for learning
- As parents, you can help in the following ways:
  - o Model good digital habits for your child.
  - o Know your child well, and have conversations with your child about safe and responsible use of technology.
  - o Set ground rules for internet and technology use.
  - o Navigate the internet together to understand their usage.

# THANKS!



Further questions?

[askndlp@ctss.edu.sg](mailto:askndlp@ctss.edu.sg)

**CREDITS:** This presentation template was created by [Slidesgo](#), including icons by [Flaticon](#), and infographics & images by [Freepik](#)

